






WATER FOR LA



Think about all the ways you use **water** every day, like taking a shower, doing the dishes or washing your hands. What would you do if you turned on the tap and no water came out?

Water is the not-so-secret ingredient that helps Los Angeles County thrive. So, when problems like drought come along, and we suddenly have less water to use, what do we do? Luckily, LA County residents have been great at **conserving water** during drought years, but we shouldn't just stop there. We can all work together to prepare for the future, no matter the weather. By embracing **water-wise** solutions, we can make sure there is enough water to go around for all **10 million** of us for years to come.



WATERFORLA.COM



WORD BANK

SELECT A WORD FROM THE BANK AND DROP IT BELOW TO MATCH WITH A DEFINITION.

STORM DRAIN

GROUNDWATER

BASIN

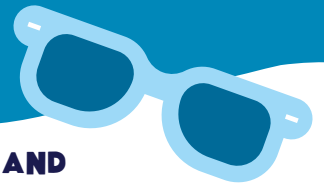
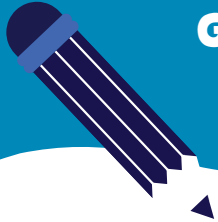
LA RIVER

RECYCLED WATER

STORMWATER

CONSERVATION

WATERSHED



WATER THAT SEEPS THROUGH THE GROUND AND IS STORED BETWEEN PARTICLES OF SOIL.

WATER THAT DRAINS OFF A LAND AREA AFTER RAINFALL.

WATER THAT GOES THROUGH SEVERAL PHASES OF CLEANING, TREATMENT AND TESTING BEFORE EVENTUALLY BEING RELEASED FOR REUSE.

THE AREA OF LAND – INCLUDING PEOPLE, ANIMALS AND PLANTS – THAT DRAINS ALL THE STREAMS AND RAINFALL INTO A COMMON OUTLET, SUCH AS A LAKE, RIVER OR OCEAN.

EFFORTS TO REDUCE WATER USAGE AND MAKE SURE IT IS BEING USED EFFICIENTLY.

A MAJOR RIVER IN LOS ANGELES COUNTY THAT STARTS IN THE WESTERN SAN FERNANDO VALLEY AND FLOWS 55 MILES LONG.

LAYERS OF HARD SOIL AND CLAY WHERE WATER IS STORED – SERVING AS AN UNDERGROUND RESERVOIR.

A SYSTEM OF PIPES AND CHANNELS THAT CAPTURES AND MOVES EXCESS WATER FROM THE STREETS TO WATERWAYS.

