

# Los Angeles County Water Plan Brief

## Addressing Regional Challenges in a Complex Environment

With over 200 agencies managing a complex network of water systems to meet the needs of our communities and environment, cross-sector collaboration and infrastructure integration are essential to address our most pressing sustainability and resilience issues. In 2019, the Los Angeles County Chief Sustainability Office completed the OurCounty Sustainability Plan to serve as the roadmap for countywide sustainability. Given its jurisdiction over the entire geographic extent of LA County, Los Angeles County Public Works (Public Works) led and coordinated the development of an integrated water supply resilience plan. Building upon the many existing local and regional planning efforts, the Los Angeles County Water Plan (CWP) was developed to include specific and actionable targets and strategies for the region.

The CWP is a living document that will evolve to meet LA County's changing water resources needs and other relevant State and Federal initiatives. Enhanced water infrastructure, livable communities, healthy watersheds, and water resources optimization are all areas of changing needs that are addressed by the CWP. Later iterations of the CWP are envisioned to expand in breadth as well as adapt to any future situations affecting water resource issues across LA County.

*The Los Angeles County Water Plan articulates a shared, inclusive, regional path forward to sustainably and equitably achieve safe, clean, and reliable water resources for Los Angeles County.*

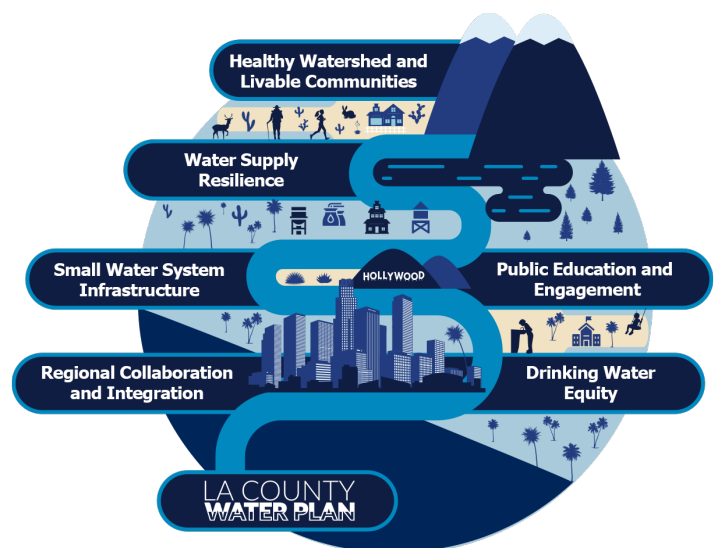
## Leveraging Expertise

Workgroups comprised of experts from water management entities across the region strategically considered countywide needs and worked together to identify the targets, strategies, and actions in the CWP. The CWP includes actionable solutions to key water supply and management issues.

## Public Perspectives

Plan development included extensive engagement with stakeholders, community members, and tribal representatives via workshops, listening sessions, and individual meetings. Stakeholder and community workshops were held through the Integrated Regional Water Management (IRWM) programs in LA County.

***Development of the CWP was an iterative process with extensive stakeholder engagement across LA County.***



## Highlights from the CWP Development

Addressing our communities' needs is critical to achieving safe, clean, and reliable water resources for Los Angeles County. The CWP establishes targets, strategies, and actions to address regional challenges in four key focal areas: Regional Water Supply Reliability; Groundwater Management & Quality; Small, At-Risk System Resilience & Drinking Water Equity; and Watershed Sediment Management. Below are the 14 strategies in the CWP.



### Strategy 1

Achieving the most efficient water use possible countywide



### Strategy 2

Collaborating on consistent drought preparedness and response messaging



### Strategy 3

Coupling local supply development with regional conveyance



### Strategy 4

Managing salt and concentrate regionally



### Strategy 5

Leveraging regional groundwater storage potential



### Strategy 6

Collaborating on water quality needs and treatment technologies



### Strategy 7

Enhancing cost-effectiveness of pumping and treating impaired groundwater



### Strategy 8

Protecting coastal groundwater basins from seawater intrusion



### Strategy 9

Facilitating regional groundwater recharge understanding and initiatives



### Strategy 10

Facilitating natural infiltration of precipitation



### Strategy 11

Providing regional support for small, at-risk water systems



### Strategy 12

Mitigating wildfire effects on water supply and quality



### Strategy 13

Managing invasive species in riparian areas



### Strategy 14

Facilitating sediment management and debris removal from flood control facilities

## 2020

Gaps Analysis completed

## 2021

### Stakeholder Workshops:

Introduce CWP

### Environmental & Environmental Justice Listening Sessions:

Solicit input on desired outcomes

### Workgroups:

Consider targets, strategies, and actions

## 2022

### Workgroups:

Refine targets, strategies, and actions

### Stakeholder Workshops and Tribal Meetings:

Review strategies

### Workgroups:

Review/Refine preliminary CWP content

### Stakeholder Workshops, Listening Sessions, and Tribal Meetings:

Review preliminary CWP content

### Additional Engagement:

Conduct water purveyor survey

## 2023

### Workgroups:

Review Draft CWP

### Draft CWP Release:

Public review and comment

### CWP Adoption:

Unanimous adoption by the Board of Supervisors

## 2024

Facilitation and Implementation

## What's Next?

Implementable actions have been developed to address strategies and complement local efforts. Public Works reviewed public comments and finalized the CWP for consideration by the Los Angeles County Board of Supervisors (Board). The Board unanimously adopted the Los Angeles County Water Plan, 2023 Edition: Water Supply Resilience on December 5, 2023. Following adoption, Public Works is facilitating ongoing collaboration to implement the CWP while leveraging Infrastructure LA as a regional hub for collaboration. To achieve our collective vision as set forth by the CWP, we must continue to work together toward regional water resilience.

*Development of the CWP was an iterative process with extensive stakeholder engagement across LA County.*

LA COUNTY  
WATER PLAN