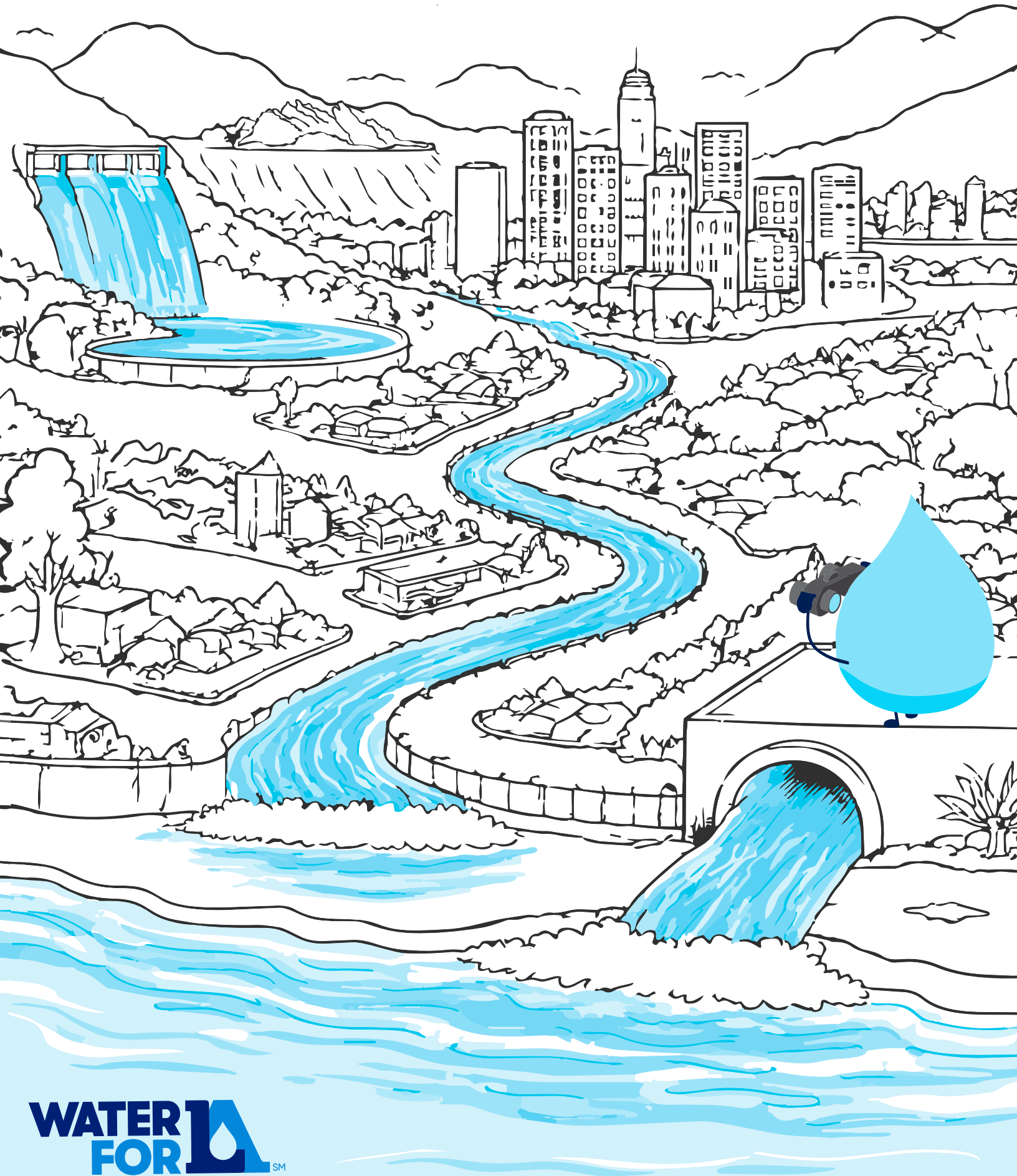


# Drip, Drop, Discover!

How Water Works in Los Angeles County



Welcome to your **Water for LA** Activity Book—your one-stop splash zone for games, coloring, drawing and learning all about how water keeps LA County flowing! Get ready to dive into fun facts, explore where our water comes from and discover how **YOU** can help take care of it.



**This book belongs to**

---

(Your Name)

# Why is Water Important? Water You Drawing?

Water is a big part of life for plants, animals and you! We use water every day, from brushing our teeth to splashing in the pool. Water doesn't just come from the faucet—it comes from rivers, lakes, rain and even the air! In LA County, we use special tools to keep our water clean and safe.

**Can you think of a way you use water? Draw a picture below!**



**Fun Fact:**  
About 75%  
of your brain  
is water!



# Our Water Cycle

## Round and Round it Goes!

Water is always on the move, traveling through sky, land and even underground. Follow the journey of water at the Santa Monica Pier, find the hidden objects and test your knowledge of the water cycle!

### 1. Precipitation

Water falls from the clouds as rain.

### 2. Collection

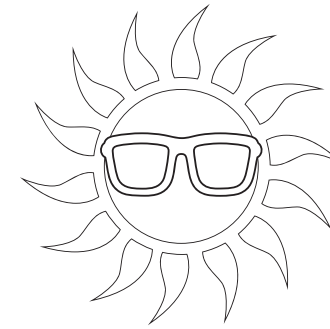
Rainwater gathers in the ocean, lakes and ground.

### 3. Evaporation

The sun heats up the water, turning it into vapor.

### 4. Condensation

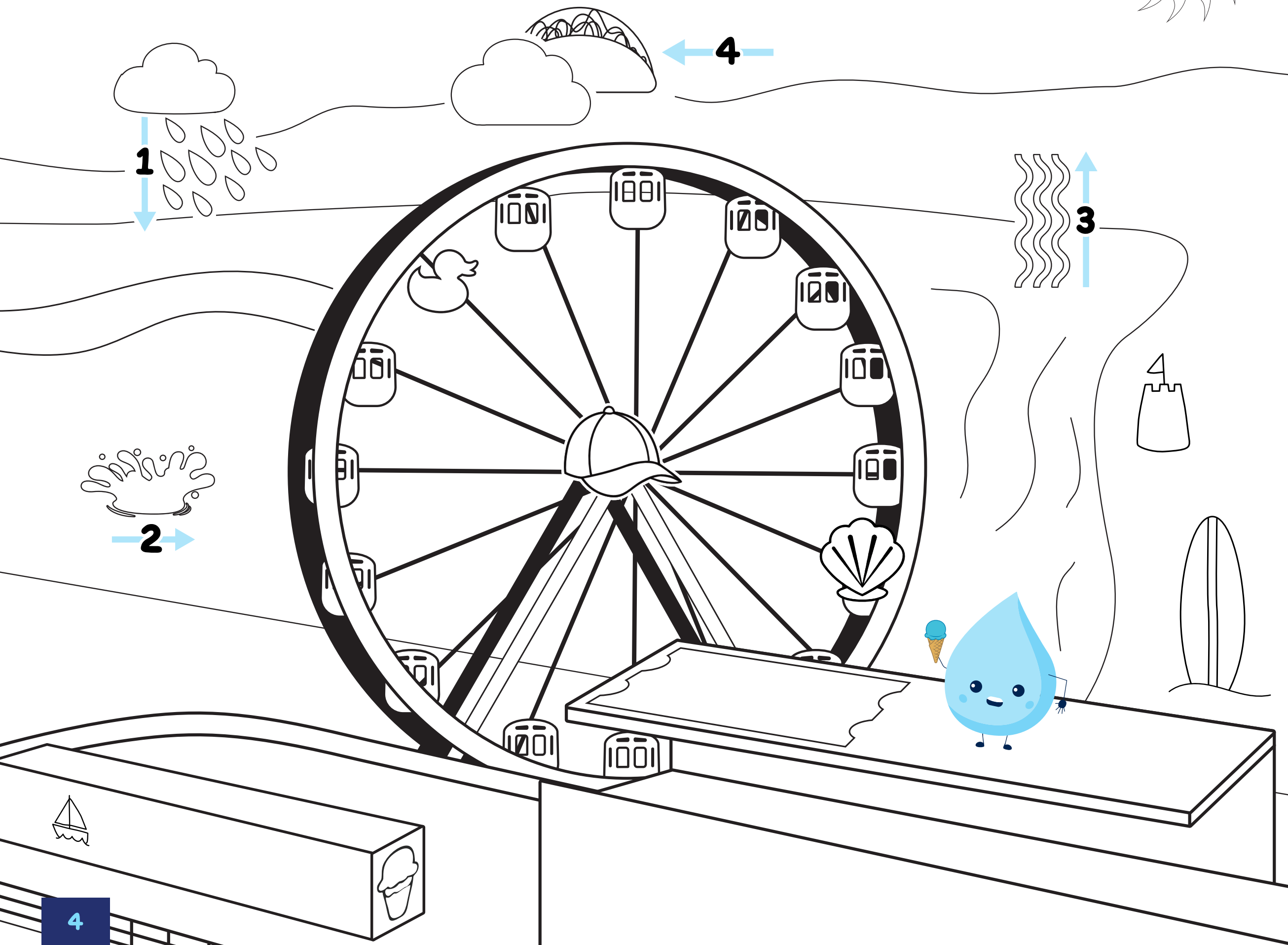
Water vapor cools down and turns into clouds.



**Fun Fact:**  
The water you drink today is the same water that dinosaurs drank millions of years ago!

**Find and circle these items at the pier!**

- Rubber ducky
- Taco
- Sailboat
- Sandcastle
- Surfboard
- Ice cream cone
- Seashell
- Sunglasses
- Baseball cap
- Ride ticket



# West Coast Weather

## A Tale of Two Climates

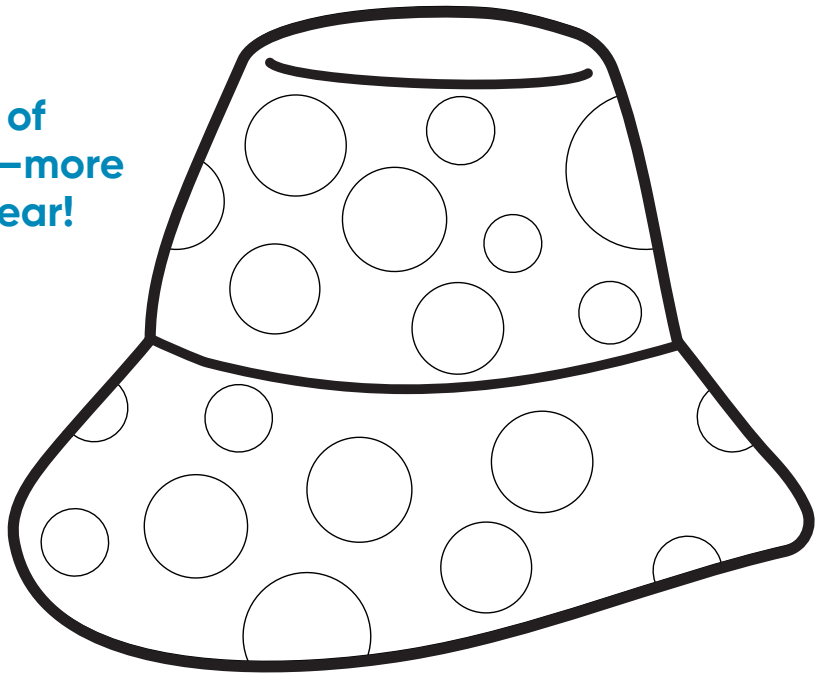


### Fun Fact:

LA County is one of five regions in the world with a unique Mediterranean climate!

LA County has a Mediterranean climate, which means we have hot, dry summers and cool, wet winters. It can be extremely hot through October, especially if the Santa Ana winds come in, and November to March it can rain as much as 40 inches!

There's an abundance of sunshine in LA County—more than 260 days of the year!



Color your new hat to enjoy a sunny day!

Most of the time, it doesn't rain, but when it does, it rains a lot.

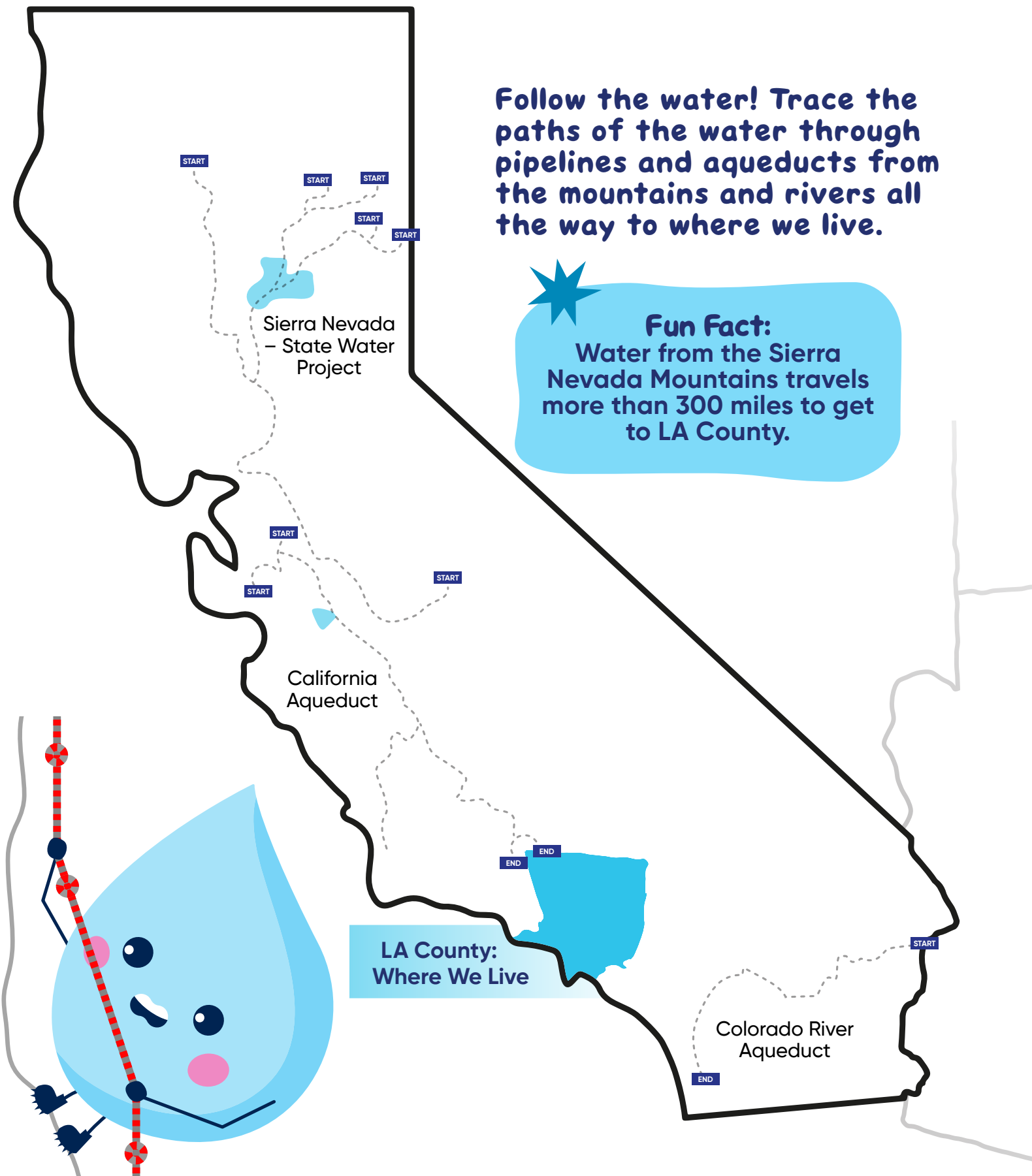


Color your new boots for a rainy day in LA County!

# Where Does Our Water Come From?

## From the Mountains to the Metro!

LA County gets nearly two-thirds of its water from other places, like the Sierra Nevada in Northern California and the Colorado River to the east. This is imported water, which is delivered to our homes via a system of pipes and pumps.

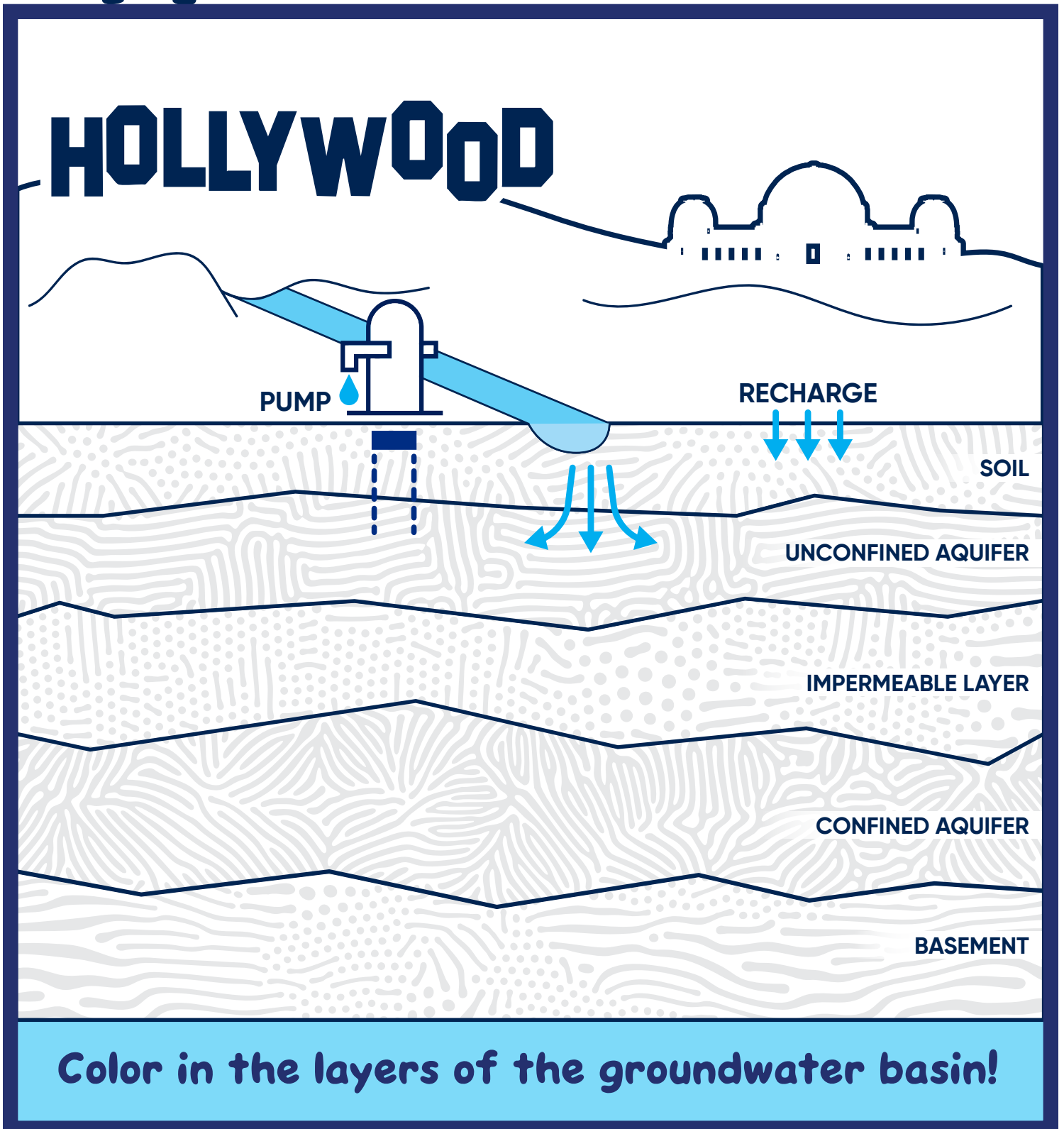


# Where Does Our Water Come From?

## Beneath the Surface



One third of our local water supply here in LA County is underground. Buried beneath layers of hard dirt and clay, groundwater is held in basins. Basins are like nature's underground water storage containers, which water managers use to store groundwater until we need it.



Color in the layers of the groundwater basin!

# What is a Watershed?

## Home to Plants, Animals, and You!

A watershed is an area of land where water from rain or snow flows downhill, comes together in streams and rivers and eventually flows into a body of water like a reservoir, bay, or ocean.

**Use these clues to match the items in the key with their LA County watershed. Then, draw a line to connect them.**

**1. Upper Santa Clara River Watershed:**

Nature shows off here! Look for bright colors growing in this watershed.

**2. Ballona Creek Watershed:**

A tall, quiet bird with long legs loves to wander through the marshes here.

**3. Los Angeles River Watershed:**

Follow this river and you'll see downtown as you float by.

**4. Santa Monica Bay Watershed:**

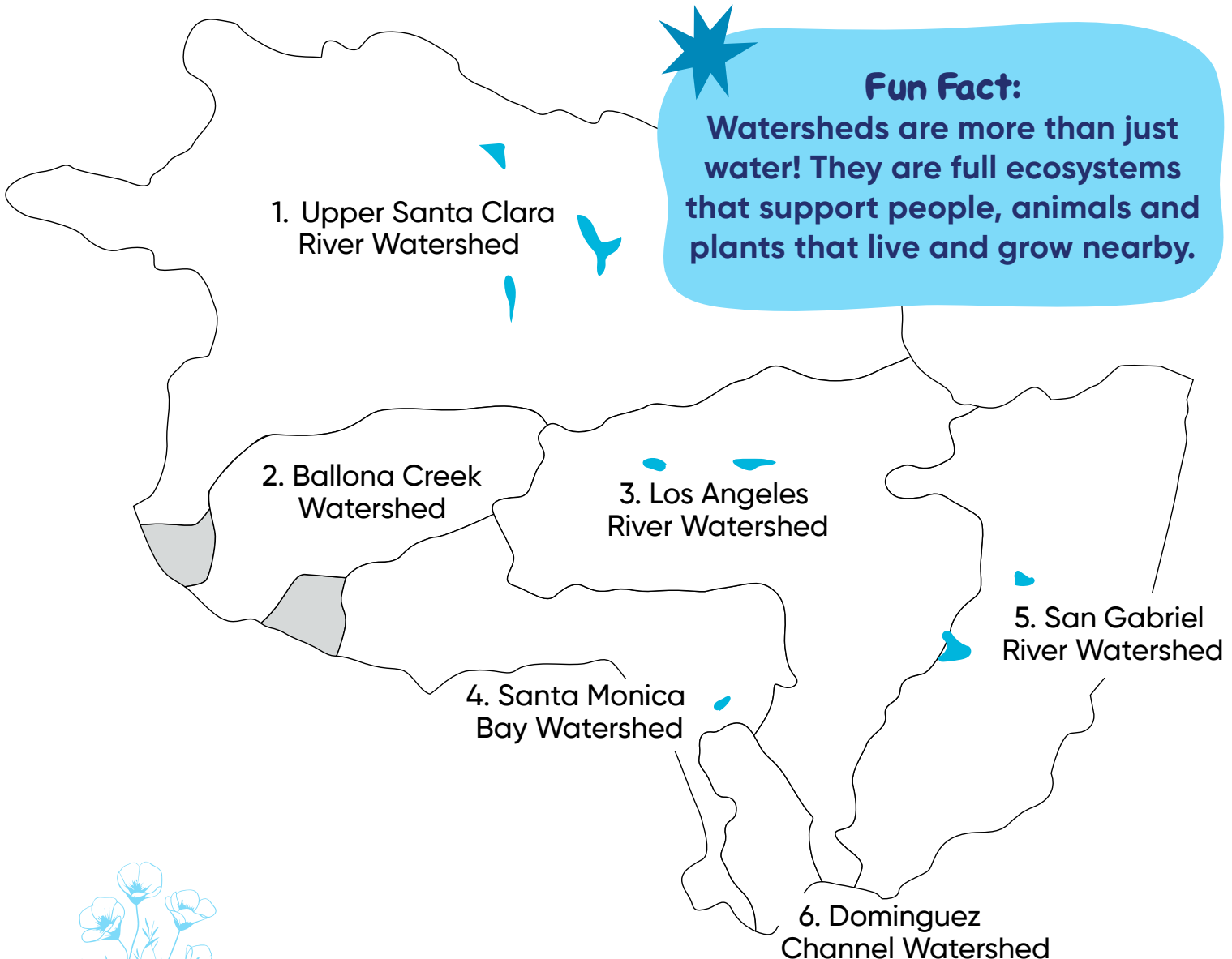
Enjoy surf, sand and sun at one of the many beaches along this coastline.

**5. San Gabriel River Watershed:**

A great place for outdoor fun, with mountains and trails to explore.

**6. Dominguez Channel Watershed:**

Home to busy ports, where shipments make their way across the water.



**Fun Fact:**  
Watersheds are more than just water! They are full ecosystems that support people, animals and plants that live and grow nearby.

						
<b>KEY</b>	Poppy	Container Ship	Blue Heron	Mountain Biking	Los Angeles Skyline	Beach Picnic

# Pollution Patrol!

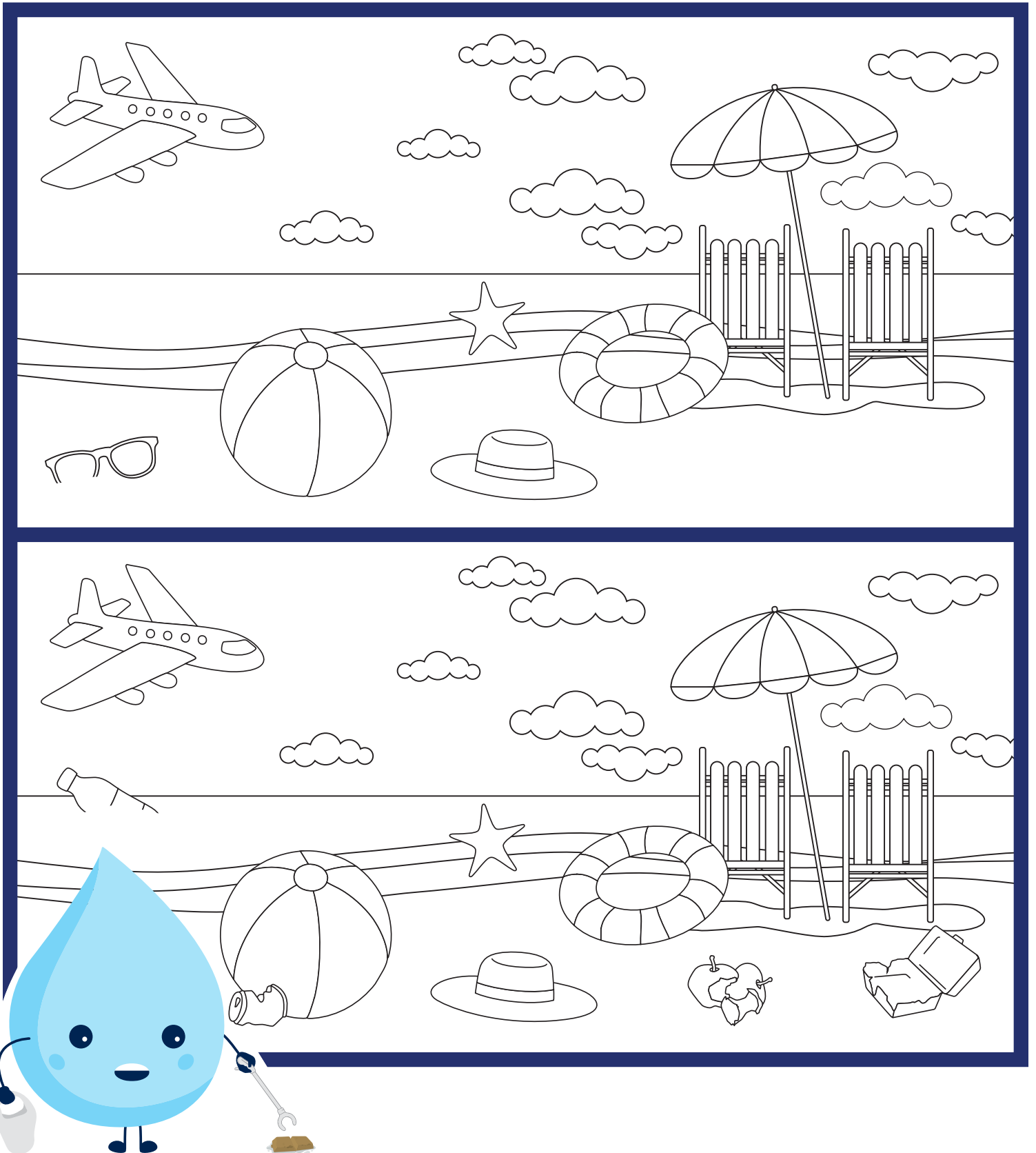
## Help Clean Up the Beach

### Fun Fact:

Every year, volunteers come together to remove between 18,000 and 20,000 pounds of trash from local beaches.

If even a fraction of trash doesn't make it into trash cans, it can create major problems for our environment. Protecting our water means keeping pollutants out of it—including all forms of litter, from plastic packaging to paper bags.

**Help clean up the beach by circling 4 differences between the top and bottom image.**



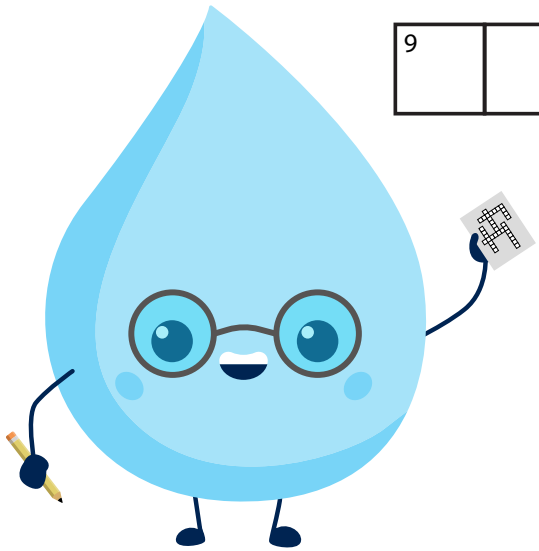
# Water Saving Word Challenge

## Don't Waste, Appreciate!

Think about the ways you use water, like doing dishes or washing your hands. What would you do if you turned on the tap and no water came out? We can make sure there is enough water for all 10 million neighbors for years to come through conservation!

**Write your answers to these water conservation clues in the crossword puzzle spaces!**

1. A device that controls the flow of water in your sink.
2. Living things that grow in soil and need water and sunlight.
3. A place where water sprays from above to wash your body.
4. A bathroom throne used for flushing waste.
5. A machine that cleans dishes using water and soap.
6. A green plant that covers lawns and fields.
7. Units for measuring liquid, about the size of a large milk jug.
8. Clothes and linens that need to be washed.
9. Unwanted drips or drops from pipes, faucets or toilets.
10. A large container of water used for swimming.
11. A device that sprays water to irrigate grass or gardens.



# The Great Storm Drain Escape!

## Follow Water Down the Storm Drain

When it rains, the water that falls from the sky goes on a journey! Everything the water picks up comes along for the ride. That's why keeping our streets clean helps keep our waterways healthy.

**Guide the raindrop on its journey through the storm drain! Avoid the obstacles to find the path to the ocean.**

**Fun Fact:**  
Even on a sunny day, up to 100 million gallons of water a day can flow through a storm drain system.



# Packed & Ready

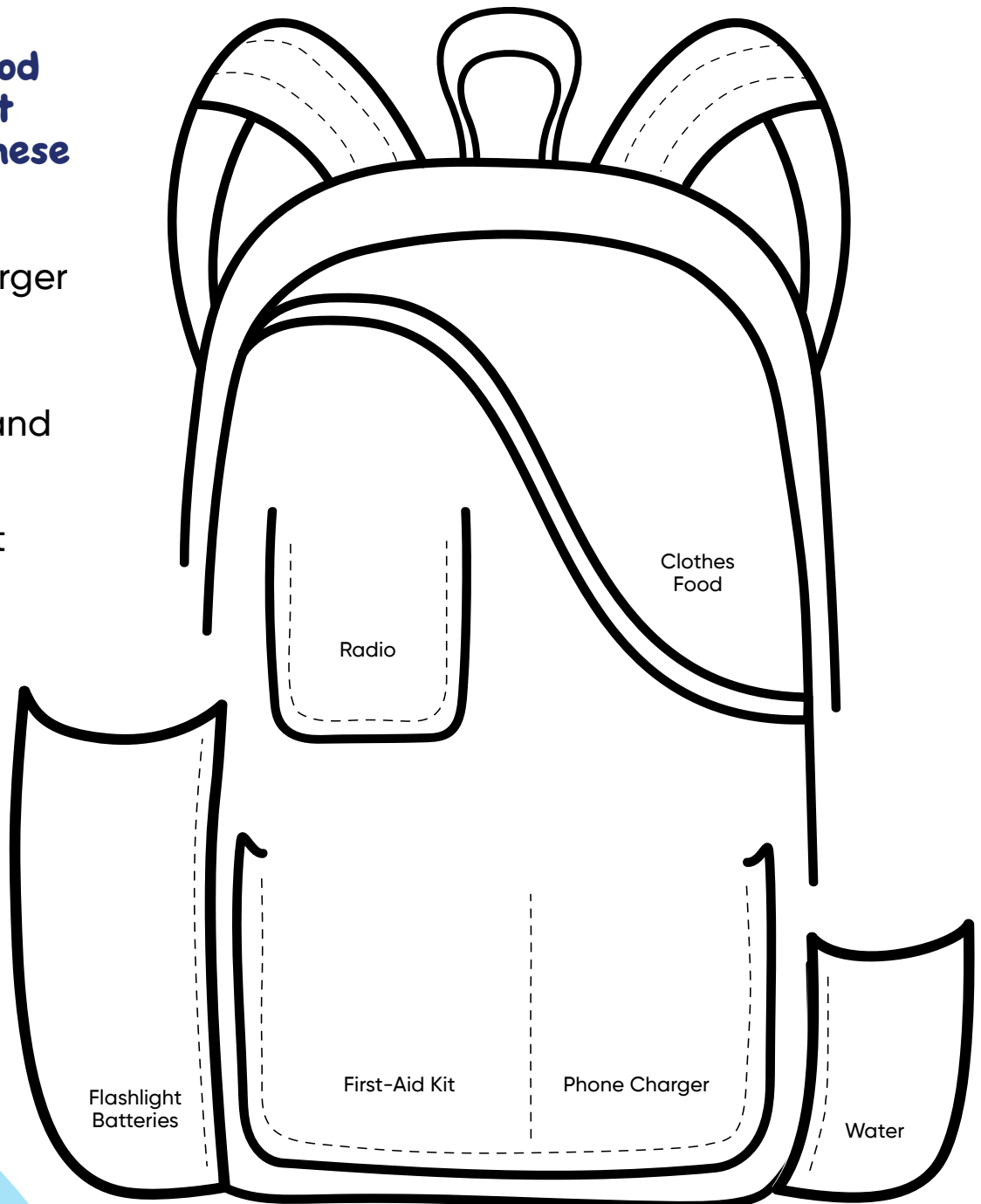
## ★ Staying Safe During Floods 🌊

Floods can happen fast, especially after a big storm. That's why it's important to have an emergency kit packed and ready. Work with your family to prepare an emergency kit to keep at your home or in the car to ensure the whole family is safe, pets included.

**Fun Fact:**  
Experts recommend having enough water in your kit to last at least three days. That's about 1 gallon per person per day!

**Pack your flood emergency kit by drawing these key items:**

- Phone Charger
- Clothes
- Flashlight and Batteries
- First-Aid Kit
- Food
- Radio
- Water



### Prepare Your Pets

If you have a furry, feathery or scaly family member, include the following in your kit:

- ✓ Grooming and sanitation items
- ✓ Food and water
- ✓ Medication
- ✓ Travel bag or crate
- ✓ Harness and leash

# Water Mix & Match

## Water Word Warrior



### Fun Fact:

Words like "aqueduct" and "watershed" go back to Ancient Rome, but we still use them today!

Water is the not-so-secret ingredient that keeps LA County thriving. It ensures farms can grow crops, businesses can make products and plants and animals can survive. Plus, we all need water for drinking, cooking and washing every day!

Can you match these water words with their correct meaning?  
Select a word from the bank to match the definition.

Groundwater

Local Water

Conservation

Watershed

Imported Water

Stormwater

Basin

Storm Drain

-----

1. Water that is stored under the ground, in pockets between rocks and dirt.

-----

2. Rainwater that flows off streets, sidewalks and buildings when it rains.

-----

3. Water that comes from faraway places, like mountains or rivers outside of LA County.

-----

4. Water that comes from right here in LA County, like rain or groundwater.

-----

5. An area of land where rain and streams flow into the same place.

-----

6. Saving water by using only what we need and not wasting it.

-----

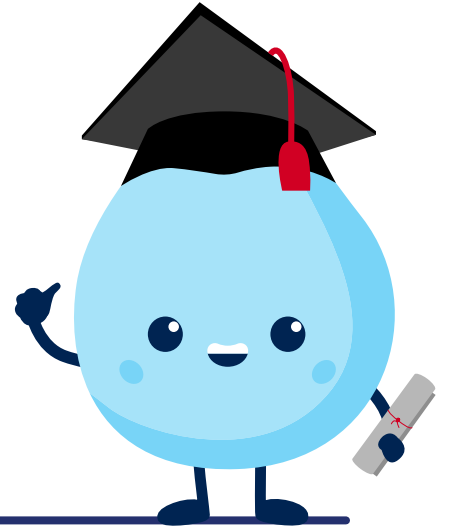
7. A big bowl-shaped area underground where water can collect and be stored.

-----

8. A grate that catches rainwater and carries it away through pipes underground.

# CONGRATULATIONS!

You're now an official LA County  
Water Advocate



(Your Name)

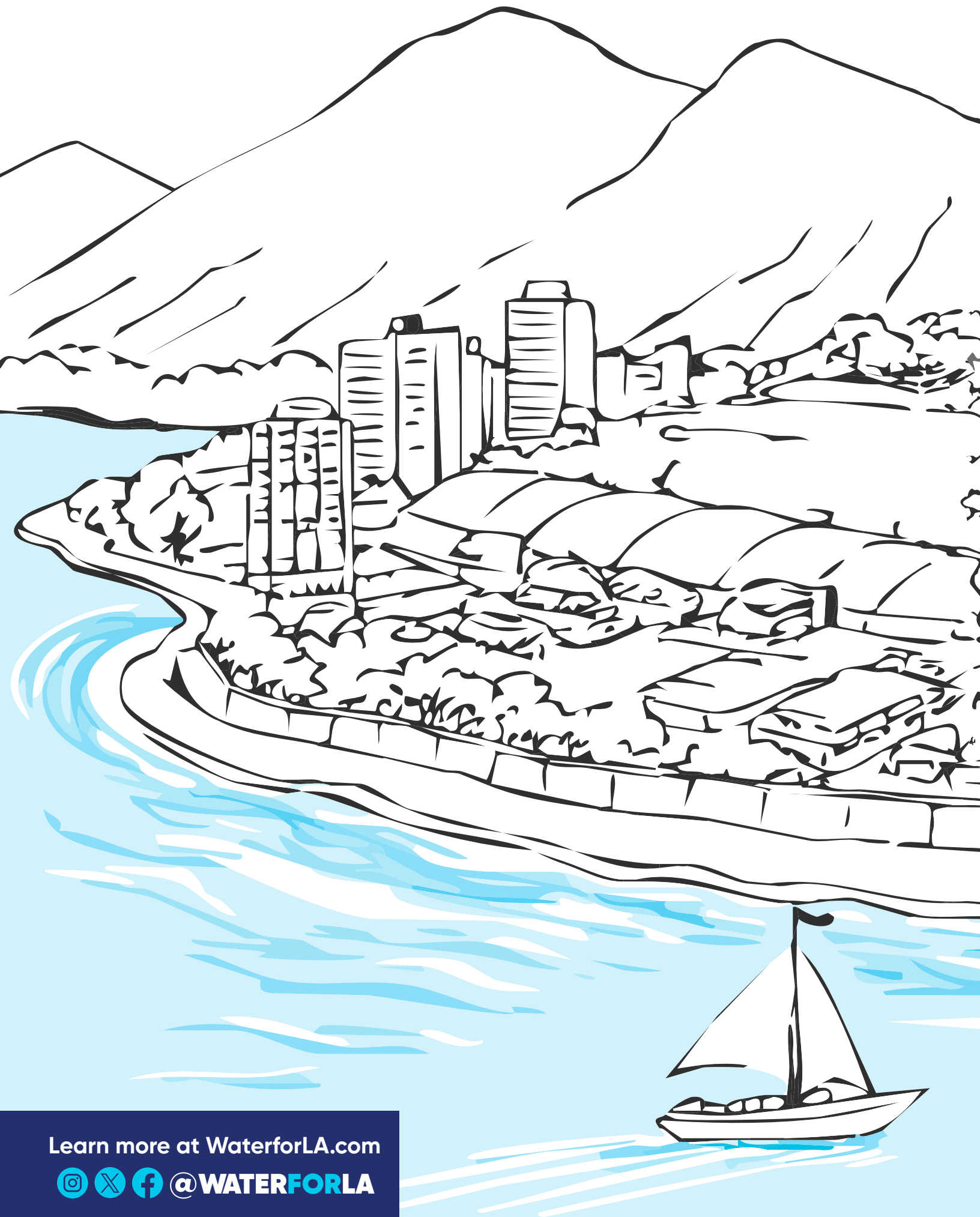
Check your work below by spinning  
the activity book upside down!

**Crossword Key:**  
1 Faucet, 2 Plants, 3 Shower, 4 Toilet, 5 Dishwasher, 6 Grass, 7 Gallons,  
8 Laundry, 9 Leaks, 10 Pool, 11 Sprinkler

**Spot the Difference Key:**  
Rotten apples, Soda can, Styrofoam food container,  
Plastic water bottle

**Word Bank Key:**  
1 Groundwater, 2 Stormwater, 3 Imported Water, 4 Local Water, 5  
Watershed, 6 Conservation, 7 Basin, 8 Storm Drain

**Hidden Object Key:**  
Rubber ducky - On the top left of the ferris wheel. Taco - In the cloud.  
Sailboat - On the left side of the pier structure. Surfboard - On the right  
in the sand. Ice Cream - On the right side of the pier structure. Seashell  
- On the bottom right of the ferris wheel. Sunglasses - On the sun in the  
top right. Baseball Cap - In the center of the ferris wheel. Ride Ticket -  
To the left of the mascot. Sandcastle - On the shore in the sand.



Learn more at [WaterforLA.com](https://WaterforLA.com)

   @WATERFORLA